

Make safety our shared destination

Safety Experience

Low speaker volume leading to Loss of ATC communication



Avoidance

- Check the volume when using your headset
- Be aware of sector boundaries
- Never interrupt the process during ATC sector change
- Ensure checking at the earliest opportunity
- Use data link when possible (e.g. ATIS)



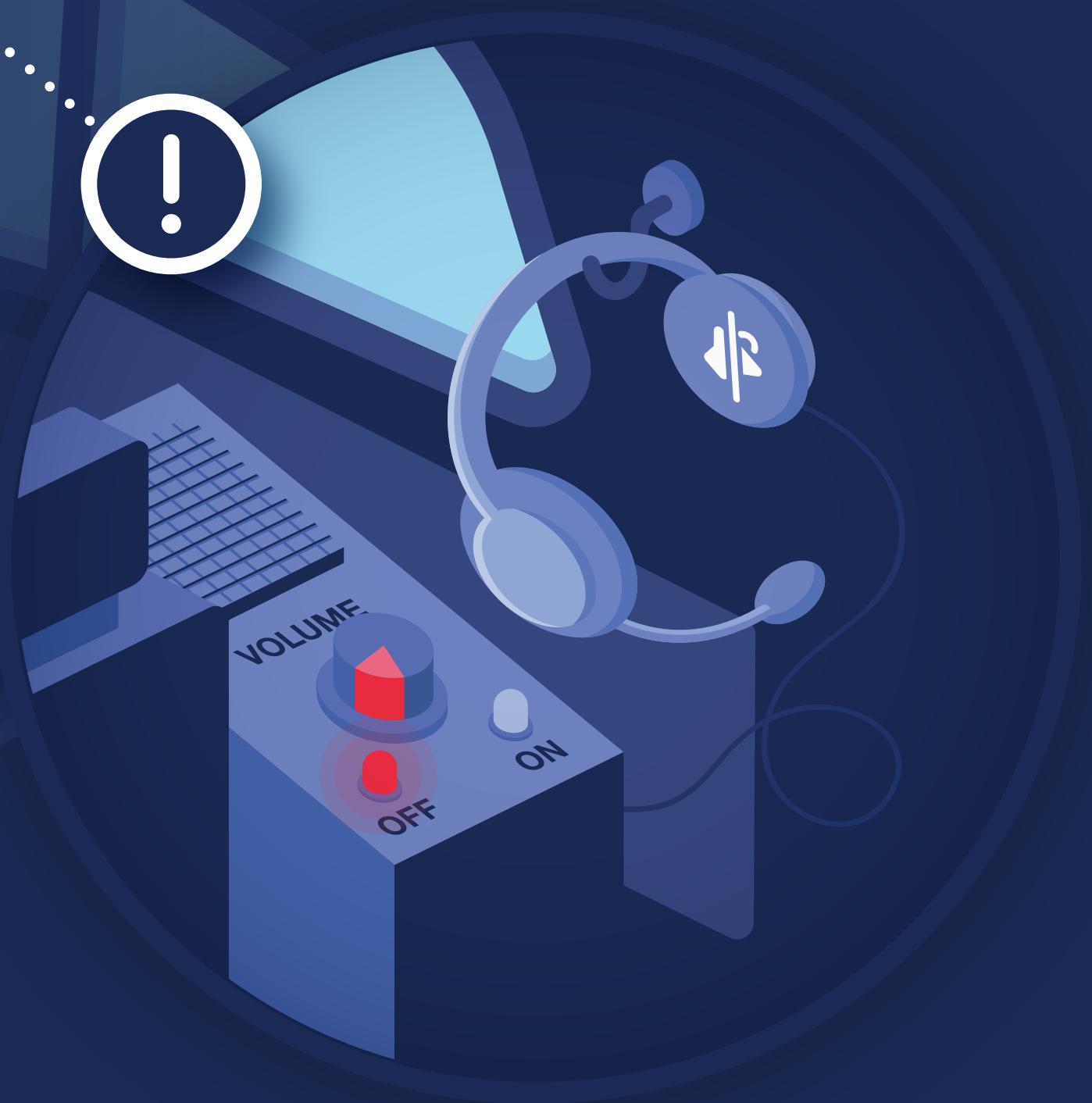
Detection

- Perform a radio check in case of "long" communication silences



Recovery

- Use CPDLC if available
- Monitor 121.5 MHz



Find out more on
d10x.airbus.com



AIRBUS