

Make safety our shared destination

## Safety Experience

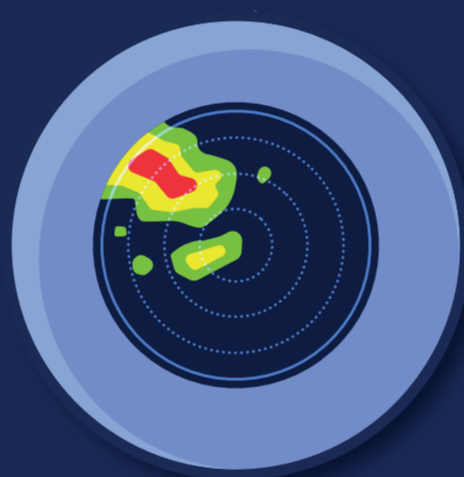
# Anticipate, detect and recover from windshear



### Anticipate

#### Consider all data available:

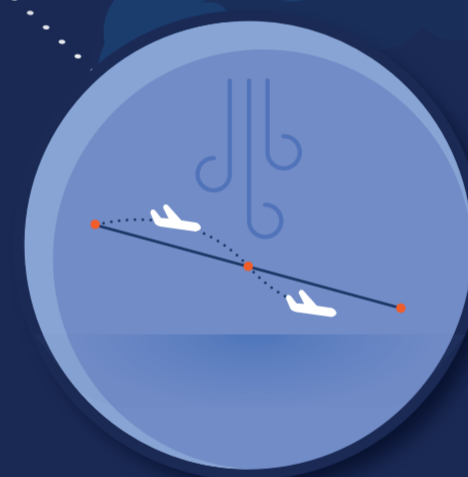
- ATC indications
- Recent weather reports
- Visual observations
- Pilot reports
- Crew experience with the airport environment and weather conditions



### Detect

#### Use all available means:

- PFD, ND indications
- Reactive Windshear System
- Predictive Windshear System if available
- Flight crew observations



### Recover

#### Follow the procedures when encountered:

- FCTM technique: **SUSPECTED WS** & **WS AHEAD**
- Memory items: **WS AHEAD** & **WINDSHEAR**
- Keep SLAT FLAP and GEAR configuration when **WINDSHEAR** is encountered



Find out more on  
[d10x.airbus.com](https://d10x.airbus.com)



**AIRBUS**