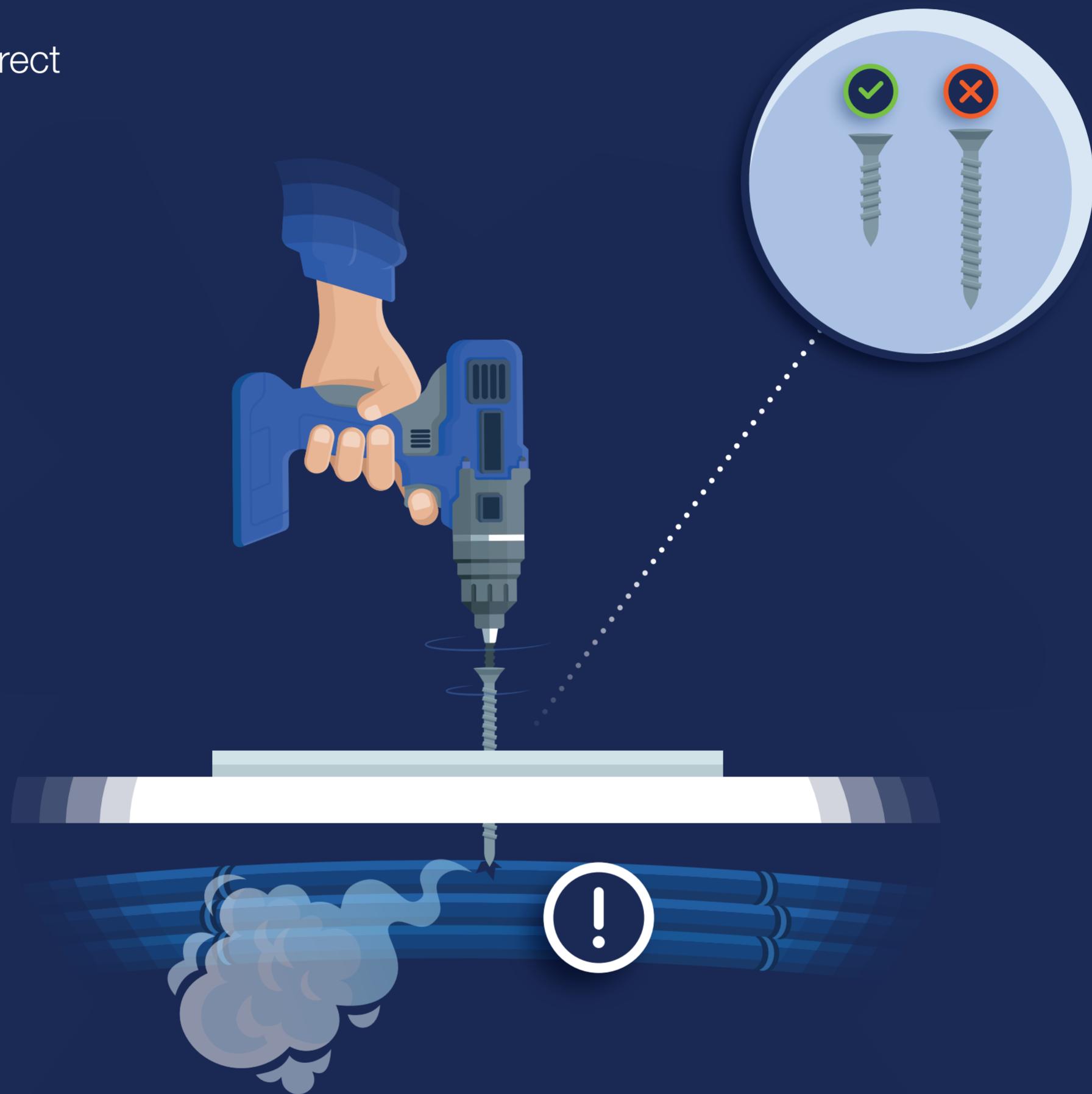


Make safety our shared destination

Safety Experience

Always follow the procedures !

Installation of incorrect
screw length



! Potential effects

During maintenance activities, using a longer screw than required can damage other components installed behind.

Such damage may not be readily visible but could have an impact on subsequent flights.

✓ Recommendations



Follow carefully the procedures, even for perceived “simple” tasks



Strictly adhere to the Technical Data Documentation



Use the appropriate Part Numbers for maintenance operations



Find out more on
d10x.airbus.com



AIRBUS